

*Nuance PaperPort 14 Enterprise
Network Installation Guide*

Document version 1.03

Last updated: August 26, 2011

*Nuance Communications, Inc
1 Wayside Road
Burlington, MA 01803-4609
United States of America*

© 2011 Nuance Communications, Inc. All rights reserved. Subject to change without prior notice.

Nuance, ScanSoft, and the Nuance and ScanSoft logos are trademarks or registered trademarks of Nuance Communications, Inc. or its affiliates in the United States and other countries.

Windows® is a trademark of Microsoft Corporation in the United States and/or other countries. Other product names and images used in this guide may be trademarks or registered trademarks of their respective companies and are hereby acknowledged.

Table of Contents

PAPERPORT 14 ENTERPRISE	1
PRODUCT DEFINITION	4
ENTERPRISE EDITION OF PAPERPORT 14 PROFESSIONAL	5
SYSTEM REQUIREMENTS	5
PAPERPORT 14 DVD-ROM LAYOUT	6
INSTALLATION OF THE PREREQUISITE PACKAGES	7
INSTALLATION IN DISTRIBUTED ENVIRONMENTS	8
STEP 1A: ADMINISTRATIVE INSTALLATIONS	9
STEP 1B: ADMINISTRATIVE INSTALLATIONS / CUSTOMIZING PAPERPORT	11
STEP 1C: ADMINISTRATIVE INSTALLATIONS / CUSTOMIZING PDF VIEWER PLUS	11
STEP 1D: ADMINISTRATIVE INSTALLATIONS / CUSTOMIZING PDF CREATE	12
STEP E: CLIENT INSTALLATIONS	13
UNINSTALLING PAPERPORT 14 FROM A CLIENT COMPUTER	15

Product definition

This document covers the main installation scenarios for the Enterprise edition of the Nuance PaperPort 14 Professional product. The Administrative setup related topics contain the necessary information for special deployment systems such as Active Directory Group Policy.

PaperPort 14 Professional is a product built-up from the following main software components:

- PaperPort program (also includes ImageViewer, ScanDirect and Scanner Setup Wizard)
- Nuance PDF Viewer Plus 7.1
- PDF Create 7.1
- PaperPort Image Printer 14
- Nuance Cloud Connector (optional component)
- PaperPort Anywhere (optional component in the Enterprise edition)

The command lines below contain [msi-files]. Since *PDF Viewer Plus*, *PDF Create* and *PaperPort Image Printer* have to be installed separately, you should use the relevant msi files for installation of the given software component:

- "Nuance PaperPort 14.msi" for the main PaperPort application,
- "Nuance PDF Viewer Plus.msi" for the Nuance PDF Viewer Plus component,
- "PDF Create 7.msi" for the PDF Create component,
- "PaperPort Image Printer.msi" or "PaperPort Image Printer 64-bit.msi" for the PaperPort Image Printer component.
- "Nuance_Cloud_Connector.msi" for the Nuance CloudConnector

To install the PaperPort Anywhere program component, you should use

- "PaperPort Anywhere-Setup.exe"

IMPORTANT

- In place of the PDF Viewer Plus and PDF Create components, PDF Converter Professional 7.1 (or above) can be used. In this case the Nuance PDF Viewer Plus and PDF Create component should not be installed.
- For PaperPort Anywhere installation, you will also need to turn this feature on in the Nuance PaperPort 14 component.

Enterprise Edition of PaperPort 14 Professional

The Enterprise version of PaperPort 14 is designed to be deployed and used in a distributed environment. It has some additional features compared to its retail counterpart. These are the following:

- The software does not require activation
- Electronic product registration is disabled
- Silent installation
- Customizable installation directory
(available as a command-line parameter only)

System Requirements

PaperPort and its software components can be installed onto the following operating system environments: Microsoft Windows XP (32-bit) SP3 or above, Windows Vista SP2 or above, Windows 7.

For precise system requirements, see the corresponding documentation (PaperPort Release Notes file) located in the <language> subfolder of the Docs directory.

PaperPort 14 Enterprise supports English, French and German as user interface languages.

Note that performance and speed will be enhanced if your computer's processor, memory, and available disk space exceed minimum requirements.

PaperPort 14 DVD-ROM layout

PaperPort Professional 14 is a 32-bit application and it can run on both 32 and 64-bit operating systems. PaperPort installer location on the DVD-ROM:

PaperPort\ folder

PaperPort Image Printer, PDF Create and Nuance Cloud Connector have both 32 and 64-bit versions located at the following paths:

PDF Create

PDFCreate\System32\ folder (32-bit version)

PDFCreate\System64\ folder (64-bit version)

PaperPort Image Printer

PPImgPrinter\System32\ folder (32-bit version)

PPImgPrinter\System64\ folder (64-bit version)

Nuance Cloud Connector

NuanceCloudConnector\SYSTEM32\ folder (32-bit version)

NuanceCloudConnector\SYSTEM 64\ folder (64-bit version)

Nuance PDF Viewer Plus and *PaperPort Anywhere* run on both 32 and 64-bit operating systems.

PaperPort Anywhere

OfficeDrop \ folder

Nuance PDF Viewer Plus

PDFviewer\ folder

Installation of the prerequisite packages

If you are performing the standard installation procedure via the AUTORUN executable located in the root folder of the DVD-ROM, this executable will automatically install all the “prerequisite” software packages necessary for the PaperPort software components before launching their product installer.

When installing PaperPort 14 in a network environment, the AUTORUN executable is not used, that is, system administrators should ensure that these prerequisite software packages get installed on the client computers . The necessary prerequisites are located in the

Prerequisite\ folder on the DVD-ROM.

Prerequisites

The prerequisite software components are the following:

- VCredist_x86.exe and VCredist_x64.exe
Microsoft Visual C++ 2005 Redistributable Package
(On 64-bit systems both the x86 and the x64 version must be installed)
- VCredist9_x86.exe and VCredist9_x64.exe
Microsoft Visual C++ 2008 Redistributable Package
(On 64-bit systems both the x86 and the x64 version must be installed)
- VCredist10_x86.exe and VCredist10_x64.exe
Microsoft Visual C++ 2010 Redistributable Package
(On 64-bit systems both the x86 and the x64 version must be installed)
- Msxml6-x86.msi and Msxml6_x64.msi
MSXML 6.0 Parser and SDK
- dotNetFx_Full_x86_x64.exe
Microsoft .NET Framework 4 redistributable package

Installation in distributed environments

In a corporate environment, system administrators may use a two-step procedure for software deployment:

- Step 1: Administrative installation, which installs the product's required file set on the corporate file server and presets certain installation options to configure client installation.
- Step 2: Client installation, which installs the product on the client machine according to the options prepared during the administrative installation.

This procedure requires system administrators to launch MSIEXEC.exe with elevated privileges and provide the necessary standard MSI command-line options (/a for administrative, and /i for client installation). System administrators can install the product to the default installation folder or they can use a custom installation folder.

Upgrading from previous Nuance software versions

Before performing Client installation, the system administrator should ensure that previous versions of the following Nuance products are not installed on the Client computers:

- Nuance PaperPort,
- Nuance PDF Viewer Plus,
- PDF Create,
- PaperPort Image Printer

If one or more of these are present, please uninstall these programs from the client computer(s) before starting with PaperPort 14 Client installation.

Since PDF Viewer Plus and PDF Professional cannot co-exist on the same computer and since PDF Professional 7 (or above) has lot more features than PDF Viewer Plus, we recommend not removing PDF Professional 7 from the client computer(s). Instead, for such client computers simply do not perform Client installation of the PDF Viewer Plus and PDF Create components. In this case PaperPort will use PDF Professional for displaying/viewing PDF files.

The following sections describe how system administrators can install PaperPort components.

Step 1a: Administrative installations

1. Start installation of *PaperPort* by navigating to the PaperPort subfolder of the DVD-ROM and issue the following command:

```
MSIEXEC /a "Nuance PaperPort 14.msi" TRANSFORMS=lang.mst <ENTER>
```

Use one of the available language transform files:

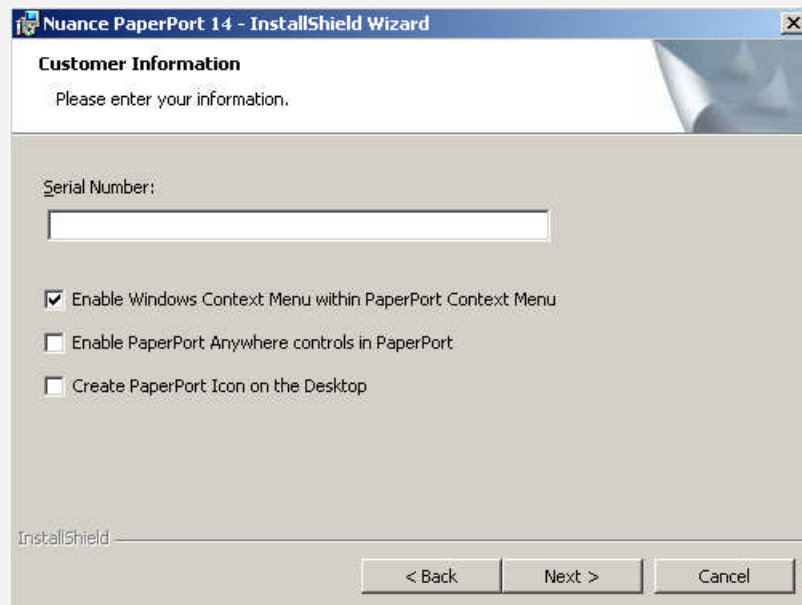
- 1031.mst for installing with German user interface,
- 1033.mst for installing with English user interface,
- 1036.mst for installing with French user interface.

or

```
SETUP.exe /a <ENTER>
```

Follow the instructions of the installation wizard.

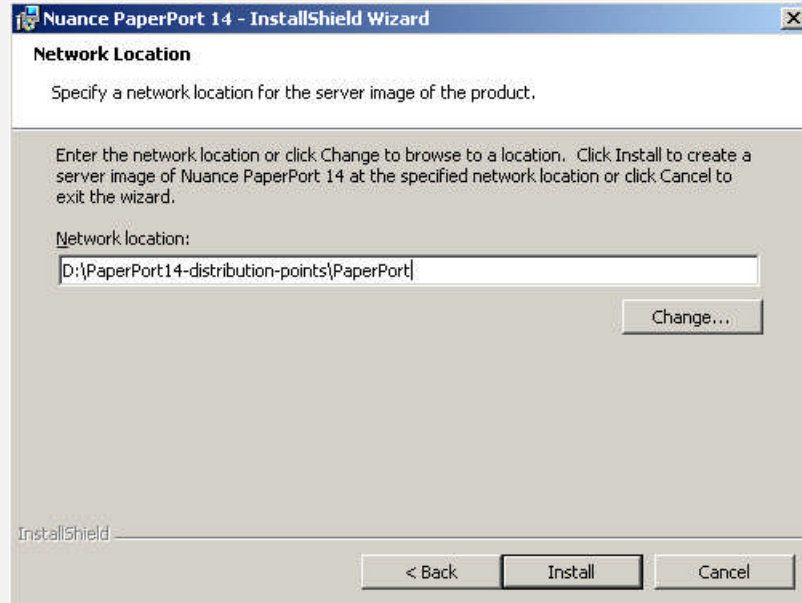
1. Click "Next" in the Welcome screen and enter the serial number.



Notes:

- The serial number and all options will be stored in the ADMIN.mst transform file.
2. On the Network Location screen specify a target folder for the administrative installation. This location is also known as a *Software Distribution Point*. This folder will contain the product msi file, the mst files (ADMIN.mst and the language mst files) and also the extracted binary files in a hierarchical folder structure.

Make sure that the target folder is shared over the network and accessible for all users.



For example, the following client-side installation sample uses

```
D:\PaperPort14-distribution-points\PaperPort
```

as the target folder where `D:\PaperPort14-distribution-points` is a shared folder and accessible for all users.

3. Click Install and wait until the installation completes. It will result in an additional .mst file (ADMIN.mst – located at the shared distribution folder). It contains all settings for client installation.

Repeat steps 1-4 for the remaining software components (Nuance *PDF Viewer Plus*, *PDF Create* and *PaperPort Image Printer*).

Initiate these installs from the appropriate subfolders of the DVD-ROM: For components with 32 and 64-bit versions (*PDF Create* and *PaperPort Image Printer*), you need to create installers for both versions. *PDF Viewer* has a 32-bit version only, so only one installer (32-bit) needs to be created for this component. The appropriate installers are located under the System32 and System64 subfolders on the DVD-ROM.

Specify different target folders for these administrative installations. For example:

```
D:\PaperPort14-distribution-points\PDFCreate_32
```

```
D:\PaperPort14-distribution-points\PPImagePrinter_32
```

```
D:\PaperPort14-distribution-points\PDFCreate_64
```

```
D:\PaperPort14-distribution-points\PPImagePrinter_64
```

Step 1b: Administrative installations / Customizing PaperPort

During the installation of the PaperPort component, specific installation options are available. Several InstallShield Wizard pages drive you through the available features. These features are controllable via command-line switches as well

Screen	Feature name	Feature description	Installer property
#1	Serial number	Adds a serial number as a parameter.	ISX_SERIALNUM
	Enable Windows Context Menu within PaperPort Context Menu	Enables Windows context menu in PaperPort.	SWCNTMNU
	Enable PaperPort Anywhere controls in PaperPort	Enables Enable PaperPort Anywhere controls in PaperPort.	SWOFFICEDROP
	Create PaperPort Icon on the Desktop	Creates a PaperPort Icon on the Desktop after installation success.	PPSHORTCUT

Step 1c: Administrative installations / Customizing PDF Viewer Plus

During the installation of the PDF Viewer Plus component, specific installation options are available. Several InstallShield Wizard pages drive you through the available features. These installer features cover the different integration settings (into browsers) and custom options of this software component. These features are also controllable via command-line switches.

Please note that the default value for almost all settings is ON. The possible installer property values can be "1" or "", where "1" means that the appropriate feature is required and "" omits the feature. The following table indicates all the customizable properties.

Screen	Feature name	Feature description	Installer property
#1	Create dynamic PDF Forms	Installs the Auto-Form Typer component.	ISINSTALLFORMTYPER
	Internet Explorer Integration	Enables the Internet Explorer add-in for displaying PDF files. Enables Internet Explorer context menu handler of PDF Converter. It downloads the selected PDF files and converts them into editable formats.	IEINTEGRATIONALL
	Google Chrome Integration	Enables Google Chrome add-in of PDF Converter Enterprise for displaying PDF files.	ISINSTALLCHROMEADDIN
	FireFox Integration	Enables FireFox add-in of PDF Converter Enterprise for displaying PDF files and installs PDF Converter FireFox Add-in.	ISINSTALLFIREFOXADDIN
#2	Set Nuance PDF Viewer Plus as your default viewer for PDF files	Associates PDF Viewer Plus for the PDF documents (.PDF) on the system.	SSSETPRODEFVIEWER

Customizable installation directory available as a command-line parameter: INSTALLDIR

Step 1d: Administrative installations / Customizing PDF Create

During the installation of the PDF Create component, specific installation options are available. Several InstallShield Wizard pages drive you through the available features. These installer features cover the different integration settings (into MS Office, Windows and Internet Explorer) and custom options of this software component. These features are also controllable via command-line switches.

Please note that the default value for almost all settings is ON. The possible installer property values can be "1" or "", where "1" means that the appropriate feature is required and "" omits the feature. The following table indicates all the customizable properties

Screen	Feature name	Feature description	Installer property
#1	Create PDF files from Microsoft Word	Installs the PDF Create Word Add-in.	ISINSTALLWORDADDIN
	Create PDF files from Microsoft Excel	Installs the PDF Create Excel Add-in.	ISINSTALLEXCELADDIN
	Create PDF files from Microsoft PowerPoint	Installs the PDF Create PowerPoint Add-in.	ISINSTALLPPTADDIN
	Use PDF Create Add-in in Microsoft Outlook	Enables the mail archiving feature of PDF Professional.	SSOUTLOOKADDINCRE
	Enable Nuance PDF toolbar in Microsoft Office	Makes the Nuance PDF toolbar visible in Office applications. Even if the toolbar is not visible, installed components' features can be accessed via menu commands.	SHOWOFFICEADDINICON
	Lotus Notes Integration	Installs PDF Create and PDF Converter Lotus Notes Add-in.	SSLOTUSADDINCRE
#2	Create shortcuts for Nuance PDF Create on the desktop	Create shortcuts for Nuance PDF Create on the desktop.	SSDESKTOPSHORTCUT
	Create shortcuts for Nuance PDF Create in the Quick Launch toolbar	Creates shortcuts for Nuance PDF Create in the Quick Launch toolbar.	SSQUICKLAUNCHSHORTCUT

Customizable installation directory available as a command-line parameter: INSTALLDIR

Step e: Client installations

Client installations require administrative privileges.

1. Launch a console window with elevated privileges on the client machine.
2. Install all the prerequisite software components listed in the section PaperPort 14 DVD-ROM layout.

For example, on a 32-bit Windows 7 machine run the following:

```
MSIEXEC.exe /i "[full_path]Msxml6_x86.msi" /qb <ENTER>
```

```
VCredist_x86.exe <ENTER>
```

```
VCredist9_x86.exe <ENTER>
```

```
VCredist10_x86.exe <ENTER>
```

```
dotNetFx40_full_x86_x64.exe <ENTER>
```

Wait until the installation completes.

Install the software components of PaperPort 14 from the Software Distribution Point, one component after the other.

3. To install the *PaperPort* component with German user interface, navigate to the folder `D:\PaperPort14-distribution-points\PaperPort` and use the following command:

```
MSIEXEC /i "Nuance PaperPort 14.msi"
```

```
INSTALLDIR="C:\Nuance\PaperPort14" ALLUSERS=2
```

```
TRANSFORMS="ADMIN.mst;1031.mst" /qb <ENTER>
```

Use one of the available language transform files:

1031.mst for installing with German user interface,

1033.mst for installing with English user interface,

1036.mst for installing with French user interface.

The sample above will install the PaperPort component to the

`C:\Nuance\PaperPort14` folder.

When omitting the `INSTALLDIR` parameter in the command-line, the product will be installed to the default installation folder.

The presence of the `ADMIN.mst` transform file in the command-line is mandatory.

When installing with English user interface, there is no need to specify the language transform file. Please also note that using the `ALLUSERS=2` property is mandatory.

Follow the instructions of the installation wizard.

4. Repeat step 3 for the remaining two software components (i.e. for Nuance *PDF Viewer Plus*, *PDF Create* and *PaperPort Image Printer*).

When installing these software components, please ensure that the proper version (32-bit or 64-bit) will be installed, depending on the target client operating system.

To install the PDF Viewer Plus with English user interface on a client machine with 32-bit Windows, navigate to the proper folder on the Software Distribution Point and use the following command:

```
MSIEXEC /i "Nuance PDF Viewer Plus.msi" ALLUSERS=2  
INSTALLDIR="C:\Nuance\PDFViewer" TRANSFORMS="ADMIN.mst" /qb <ENTER>
```

To install the *PaperPort Image Printer* with French user interface on a client machine with 32-bit Windows, navigate to the proper folder on the Software Distribution Point and use the following command:

```
MSIEXEC /i "PaperPort Image Printer.msi" ALLUSERS=2  
INSTALLDIR="C:\Nuance\PPImgPrn" TRANSFORMS="1036.mst" /qb <ENTER>
```

IMPORTANT: Command-line installation parameters always overwrite mst file settings.

Uninstalling PaperPort 14 from a client computer

For removing PaperPort 14 from a client computer, all components of PaperPort need to be removed, one after the other, in any order. The components are

- PaperPort,
- Nuance PDF Viewer Plus,
- PDF Create,
- PaperPort Image Printer,
- Nuance Cloud Connector,
- PaperPort Anywhere.

Removing only the *PaperPort Image Printer* and/or *Nuance PDF Viewer Plus* will cause *PaperPort* to function incorrectly.

If PaperPort was configured to use PaperPort Anywhere at the time of installation, removing PaperPort Anywhere without also removing PaperPort will cause PaperPort to function incorrectly.

These software components can be uninstalled through the *Add or Remove Programs* Control Panel applet, or from a command-line.

To uninstall *PaperPort 14* use the following command:

```
MSIEXEC.exe /x {80A1DF0D-7A6C-4D7B-BB4A-E289AF23512E} /qb <ENTER>
```

To uninstall *Nuance PDF Viewer Plus 7.1*:

```
MSIEXEC.exe /x {042A6F10-F770-4886-A502-B795DCF2D3B5} /qb <ENTER>
```

To uninstall *PDF Create 7.1*:

32-bit version:

```
MSIEXEC.exe /x {9F66A3CC-F4D6-4808-9391-4B5D06A26C61} /qb <ENTER>
```

64-bit version:

```
MSIEXEC.exe /x {CD7A262C-287E-41DD-A0F7-733856252C6B} /qb <ENTER>
```

To uninstall *PaperPort Image Printer 14*:

32-bit version:

```
MSIEXEC.exe /x {6EF2FDAB-7FBF-4AB9-92CD-594BDD6A56B} /qb <ENTER>
```

64-bit version:

```
MSIEXEC.exe /x {715CAACC-579B-4831-A5F4-A83A8DE3EFE2} /qb <ENTER>
```

If you chose to install PaperPort Anywhere and/or Nuance Cloud Connector, you need to uninstall these components as well:

To uninstall *PaperPort Anywhere*:

```
MSIEXEC.exe /x {52357C6C-FE7F-4E8C-B045-EDE5146A1F9C} /qb <ENTER>
```

To uninstall *Nuance Cloud Connector*:

32-bit version:

```
MSIEXEC.exe /x {B45FFE60-054A-40FC-A7F9-74382C6DA514} /qb <ENTER>
```

64-bit version:

```
MSIEXEC.exe /x {1CEB61C5-57BB-437C-8C4D-788F21FB4676} /qb <ENTER>
```